

# 3. Man-Made Linear Features

On your first few orienteering excursions, you will use a lot of man-made linear features.

Man-made features are often easier to find than natural features. Linear features are things that run in a line from one point to another and they are easy to follow on the ground.

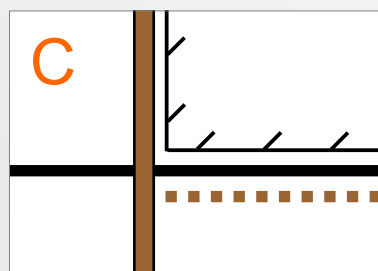
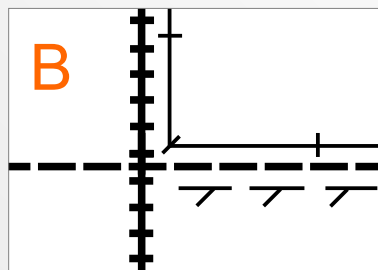
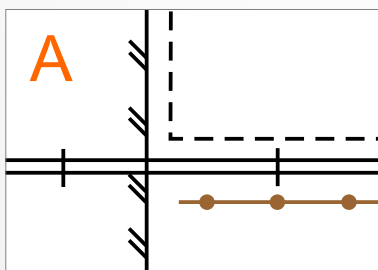
So what are man-made linear features? **Roads, tracks, paths, fences, walls, ditches, train tracks and powerlines.**

Sometimes, when two or more linear features are very close together, only the most obvious will be shown on the map (eg. a small ditch next to a sealed road might not be mapped). Be alert but not alarmed if you come across this when you are orienteering.



## Task 5

Match the maps on the left with the views on the right. (All match this time.)



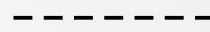
Sealed Road



Major Track



Minor Track



Path



Fence



High Fence



Ruined Fence



Earth Wall



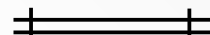
Ditch



Train Tracks



Minor Powerlines



Major Powerlines

